



Technical Data:	
Dimensions	1075 x 1960 x 813 mm
Connected Load	31.7 kW
Voltage	415 3 Phase AC
Recommended Fuses	3 x 50 A
Frequency	50 Hz
Soft Water Connection	DN 20 (R ¾" inside)
Water Connection	DN 20 (R ¾" inside)
Water Pressure	200 - 600 kPa (2 - 6 bar)
Drain Connection	DN 50
Gastronorm 1/1 (530 x 325 mm)	20 (max. 65 mm deep)
Plates Ø 32 cm – plate trolley	80
Gross Weight	375 kg
Heat Emission Latent	5706 W
Heat Emission Sensitive	3804 W



### Product Description:

- ClimaSelect – Humidity and temperature control measurement (= reliable food quality).
- 5 programmable fan speeds for best cooking uniformity.
- Up to 100 individual cooking programmes can be stored in up to 6 steps & USB interface available.
- 316 S 11 durable hygienic cooking chamber.
- EasyLoad crosswise insertion.
- EasyIn roll-in system for transport trolley racks to compensate for any unevenness of the floor up to 10 mm.
- DynaSteam2 – It speeds up the cooking process and saves energy.
- Integrated heat exchanger.
- WaveClean – Automatic cleaning system
- 3 years warranty parts and labour.

### Installation requirements:

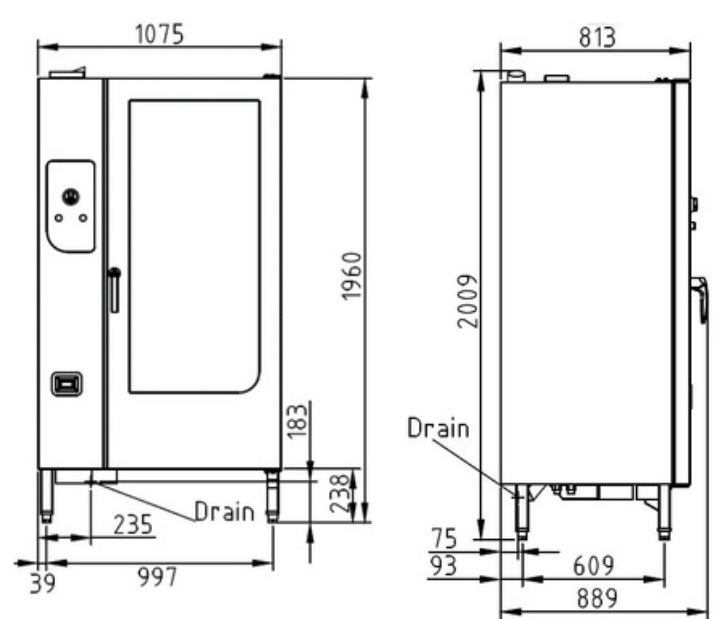
- Soft Water / Water supply / Connection to waste water provided by customer.
- If mineral content is high, reverse osmosis system may be advisable.

### Accessories:



Front View

Side View



Top View

