

UNITS  
MAY 2023

**Proud**  
of my  
**equipment**



# UNITS

THE  
TOURNUS  
ASSETS

BOX 660 MM,  
DEPTH COMPATIBLE  
WITH GN 1/1 PANS

**Noiseless sliding:**

polyamide rollers on ball bearings,  
Rilsan-coated door guide.

**Comfort:**

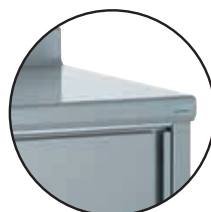
sound absorbent worktop.

**Sturdiness:**

lined, sliding doors made rigid by a  
reverse fold acting as handle.

**Easy installation:**

rear recess of 120 mm allowing for  
clearance for pipes and grooved  
plinths.

**Eye-catching:**

rounded front edge like on the  
tables and bowl sinks to match the  
surrounding elements.

**Quality finishing:**

Front and rear corners welded and  
brushed.

**Safety:**

height adjustable shelves with  
flattened, cut-proof edge.

**Easy levelling:**

adjustable legs Ø 60 mm for 50 mm  
adjustment.



Flash on our  
documentation !

ORIGINE  
FRANCE®  
GARANTIE

AENOR Cert. 65029



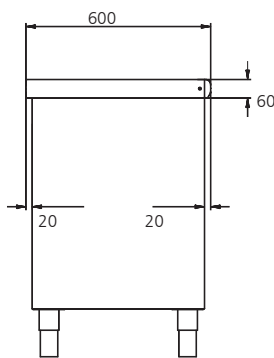
# STAINLESS STEEL UNITS WITH SLIDING DOORS

Stainless steel construction, height 900 (+ 0/50 mm). Reinforced worktop with waterproof laminated panel. **Rounded front edge**, height 60 mm. One adjustable shelf. **Reinforced inner panel, reinforced sliding doors**, suspended on a rail in the top part, with stop-block. Stainless steel legs Ø 60 mm with jacks with no exposed thread. Folded front edge and upstand, shelf, handles and floor.



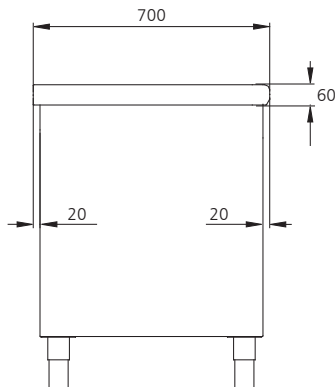
504 342

## Width 600 mm with box 560 mm deep



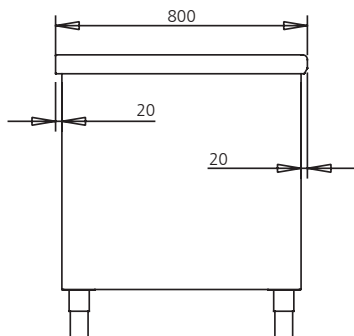
Description	Overall dim. W x I (mm)	Reference	Price
Central unit with sliding doors	600 x 1000	<a href="#">504 341</a>	
Central unit with sliding doors	600 x 1200	<a href="#">504 342</a>	
Central unit with sliding doors	600 x 1400	<a href="#">504 343</a>	
Central unit with sliding doors	600 x 1500	<a href="#">504 344</a>	
Central unit with sliding doors	600 x 1600	<a href="#">504 345</a>	
Central unit with sliding doors	600 x 1800	<a href="#">504 346</a>	
Central unit with sliding doors	600 x 2000	<a href="#">504 347</a>	
Central unit with sliding doors	600 x 2200	<a href="#">504 348</a>	
Central unit with sliding doors	600 x 2400	<a href="#">504 349</a>	

## Width 700 mm with box 660 mm deep



Description	Overall dim. W x I (mm)	Reference	Price
Central unit with sliding doors	700 x 1000	<a href="#">504 361</a>	
Central unit with sliding doors	700 x 1200	<a href="#">504 362</a>	
Central unit with sliding doors	700 x 1400	<a href="#">504 363</a>	
Central unit with sliding doors	700 x 1500	<a href="#">504 364</a>	
Central unit with sliding doors	700 x 1600	<a href="#">504 365</a>	
Central unit with sliding doors	700 x 1800	<a href="#">504 366</a>	
Central unit with sliding doors	700 x 2000	<a href="#">504 367</a>	
Central unit with sliding doors	700 x 2200	<a href="#">504 368</a>	
Central unit with sliding doors	700 x 2400	<a href="#">504 369</a>	

## Width 800 mm with box 760 mm deep



Description	Overall dim. W x I (mm)	Reference	Price
Central unit with sliding doors	800 x 1000	<a href="#">504 381</a>	
Central unit with sliding doors	800 x 1200	<a href="#">504 382</a>	
Central unit with sliding doors	800 x 1400	<a href="#">504 383</a>	
Central unit with sliding doors	800 x 1500	<a href="#">504 384</a>	
Central unit with sliding doors	800 x 1600	<a href="#">504 385</a>	
Central unit with sliding doors	800 x 1800	<a href="#">504 386</a>	
Central unit with sliding doors	800 x 2000	<a href="#">504 387</a>	
Central unit with sliding doors	800 x 2200	<a href="#">504 388</a>	
Central unit with sliding doors	800 x 2400	<a href="#">504 389</a>	

Extra cost for units on wheels (4 wheels with stainless steel casing including 2 with brakes) **prefix 51 instead of 50**



Consult'Express



Your shipping date

# STAINLESS STEEL UNITS WITH UPSTAND WITH SLIDING DOORS

Round upstand height 100 mm with flattened fold.

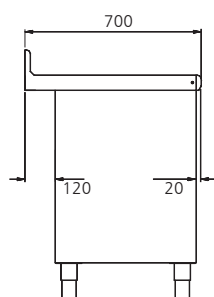
THE  
TOURNUS  
ASSET

Rear recess of 120 mm allowing for clearance for pipes and grooved plinths.

THE  
TOURNUS  
ASSET

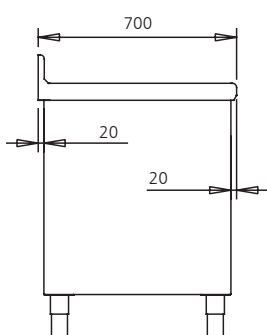
Units with a box 660 mm deep meaning a GN 1/1 container can be inserted lengthways.

## UNITS - WIDTH 700 MM WITH BOX 560 MM DEEP



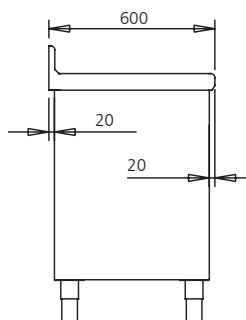
Overall dim. W x I (mm)	Reference	Price
700 x 1000	<u>524 361</u>	
700 x 1200	<u>524 362</u>	
700 x 1400	<u>524 363</u>	
700 x 1500	<u>524 364</u>	
700 x 1600	<u>524 365</u>	
700 x 1800	<u>524 366</u>	
700 x 2000	<u>524 367</u>	
700 x 2200	<u>524 368</u>	
700 x 2400	<u>524 369</u>	

## UNITS - WIDTH 700 MM WITH BOX 660 MM DEEP



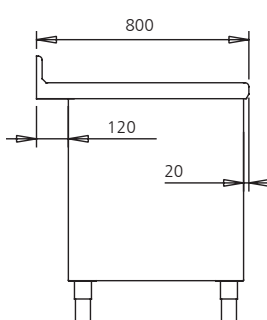
Overall dim. W x I (mm)	Reference	Price
700 x 1000	<u>524 371</u>	
700 x 1200	<u>524 372</u>	
700 x 1400	<u>524 373</u>	
700 x 1500	<u>524 374</u>	
700 x 1600	<u>524 375</u>	
700 x 1800	<u>524 376</u>	
700 x 2000	<u>524 377</u>	
700 x 2200	<u>524 378</u>	
700 x 2400	<u>524 379</u>	

## UNITS - WIDTH 600 MM WITH BOX 560 MM DEEP



Overall dim. W x I (mm)	Reference	Price
600 x 1000	<u>524 341</u>	
600 x 1200	<u>524 342</u>	
600 x 1400	<u>524 343</u>	
600 x 1500	<u>524 344</u>	
600 x 1600	<u>524 345</u>	
600 x 1800	<u>524 346</u>	
600 x 2000	<u>524 347</u>	
600 x 2200	<u>524 348</u>	
600 x 2400	<u>524 349</u>	

## UNITS - WIDTH 800 MM WITH BOX 660 MM DEEP



Overall dim. W x I (mm)	Reference	Price
800 x 1000	<u>524 381</u>	
800 x 1200	<u>524 382</u>	
800 x 1400	<u>524 383</u>	
800 x 1500	<u>524 384</u>	
800 x 1600	<u>524 385</u>	
800 x 1800	<u>524 386</u>	
800 x 2000	<u>524 387</u>	
800 x 2200	<u>524 388</u>	
800 x 2400	<u>524 389</u>	



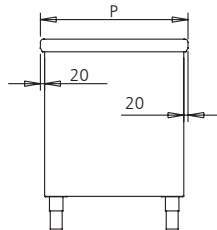
# STAINLESS STEEL UNITS

## Sliding door units on 2 sides

Rounded worktop on the 2 faces.



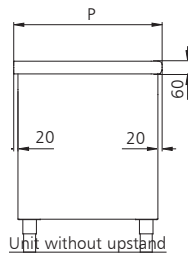
504 273



Overall dim. W x I (mm)	Reference	Price
600 x 1200	<a href="#">504 262</a>	
700 x 1000	<a href="#">504 271</a>	
700 x 1200	<a href="#">504 272</a>	
700 x 1400	<a href="#">504 273</a>	
700 x 1500	<a href="#">504 274</a>	
700 x 1600	<a href="#">504 275</a>	
700 x 1800	<a href="#">504 276</a>	
700 x 2000	<a href="#">504 277</a>	



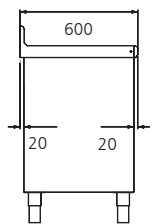
504 292



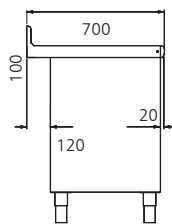
Unit without upstand

## One-side open units

Overall dim. W x I (mm)	Units without upstand		Units with upstand	
	Ref.	Price	Ref.	Price
600 x 1200	<a href="#">504 282</a>		<a href="#">524 282</a>	
700 x 1000	<a href="#">504 291</a>		<a href="#">524 291</a>	
700 x 1200	<a href="#">504 292</a>		<a href="#">524 292</a>	
700 x 1400	<a href="#">504 293</a>		<a href="#">524 293</a>	
700 x 1500	<a href="#">504 294</a>		<a href="#">524 294</a>	
700 x 1600	<a href="#">504 295</a>		<a href="#">524 295</a>	
700 x 1800	<a href="#">504 296</a>		<a href="#">524 296</a>	
700 x 2000	<a href="#">504 297</a>		<a href="#">524 297</a>	



Unit width 600 mm  
with upstand



Unit width 700 mm  
with upstand

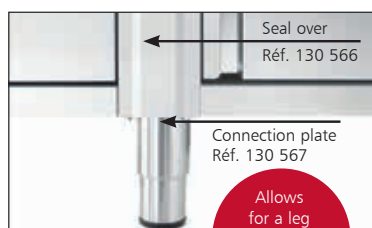
## Extras for standard units

Description	Units lengths (mm)	Reference	Price
Supplementary shelf for standard unit	Until 1000	701 705	
Supplementary shelf for standard unit	1001 to 1500	701 706	
Supplementary shelf for standard unit	1501 to 2000	701 707	
Lock for units with sliding doors (1)		<a href="#">118 882</a>	
Sheet steel for hiding the back recess on the units with upstand		701 708	
Seal cover between units 60 mm wide on front		<a href="#">130 566</a>	
Unit with 4 stainless steel wheels including 2 brakes		701 778	
Lower connection plate between units per unit		<a href="#">130 567</a>	

(1) Delivery in kit form, to be assembled.

## Option

Extra cost for units on wheels (4 wheels with stainless steel casing including 2 with brakes) **prefix 51 instead of 50**



Seal over  
Réf. 130 566

Connection plate  
Réf. 130 567

Allows  
for a leg  
to be removed:  
**easier  
cleaning.**



Consult'Express



Your shipping date

# STAINLESS STEEL UNITS



504 580

## Corner units

Stainless steel construction. Width 700 mm. Rounded edge. One hinged door and one adjustable shelf.

Description	Overall dim. W x I (mm)	Without upstand		With upstand	
		Ref.	Price	Ref.	Price
Corner unit	1000 x 1000	504 580		524 580	



504 608

## Standard units with hinged door

Description	Overall dim. W x I (mm)	Without upstand box 660 mm deep		With upstand box 560 mm deep	
		Ref.	Price	Ref.	Price
Unit with 1 hinged door (right-hand hinge)	700 x 500	504 587		524 587	
Unit with 2 hinged doors	700 x 800	504 607		524 607	
Unit with 2 hinged doors	700 x 1000	504 608		524 608	



504 641

## Units with drawers

Description	Overall dim. W x I (mm)	Without upstand box 660 mm deep		With upstand box 560 mm deep	
		Ref.	Price	Ref.	Price
4 drawers with GN 1/1 100 mm stainless steel container	700 x 500	504 641		524 641	
3 drawers with GN 1/1 100 mm stainless steel container + sliding shelf	700 x 500	504 642		524 642	
3 drawers with GN 1/1 150 mm stainless steel container	700 x 500	504 643		524 643	



504 617

## Units with doors and drawers

Same characteristics as the other units. Drawer with stainless steel GN 1/1 pan, depth 100 mm, with one adjustable shelf.

Description	Overall dim. W x I (mm)	Without upstand box 660 mm deep		With upstand box 560 mm deep	
		Ref.	Price	Ref.	Price
Unit with 1 hinged door + 1 drawer	700 x 500	504 616		524 616	
Unit with 2 hinged doors + 2 drawers	700 x 1000	504 617		524 617	
Unit with 2 sliding doors + 3 drawers	700 x 1400	504 618		524 618	
Unit with 2 sliding doors + 4 drawers	700 x 1800	504 619		524 619	

Lock and key on hinged doors (1 by door) - Ref: 701 770\*

\* The lock needs to be suited on the unit. Therefore, it must be ordered together with the unit.

## Option

Extra cost for units on wheels (4 wheels with stainless steel casing including 2 with brakes) **prefix 51 instead of 50**

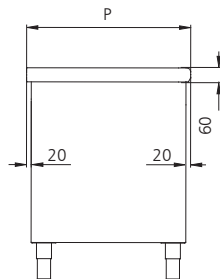






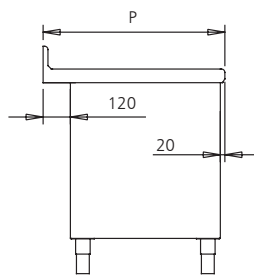
# CUSTOMIZED STAINLESS STEEL UNITS

Stainless steel construction. Height 900 mm (+0/50 mm). Work surface lined with water repellent laminated panel. Rounded front edge, height 60 mm. One adjustable shelf. Sliding door units (hinged doors for lengths to 999 mm). Stainless steel legs Ø 60 mm with jacks with no exposed thread. Flattened folds on the front edge, upstand, shelf, handles and floor.



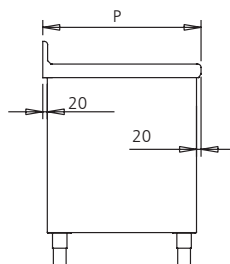
## Central units

Length (mm)	Depth 500 to 600 mm		Depth 601 to 700 mm		Depth 701 to 800 mm		Depth 801 to 900 mm	
	Ref.	Price	Ref.	Price	Ref.	Price	Ref.	Price
500 to 1000	603 230		603 250		603 270		603 290	
1001 to 1200	603 231		603 251		603 271		603 291	
1201 to 1400	603 232		603 252		603 272		603 292	
1401 to 1600	603 233		603 253		603 273		603 293	
1601 to 1800	603 234		603 254		603 274		603 294	
1801 to 2000	603 235		603 255		603 275		603 295	
2001 to 2200	603 236		603 256		603 276		603 296	
2201 to 2400	603 237		603 257		603 277		603 297	



## Units with upstand, base section WITH recess

Length (mm)	Depth 500 to 600 mm		Depth 601 to 700 mm		Depth 701 to 800 mm		Depth 801 to 900 mm	
	Ref.	Price	Ref.	Price	Ref.	Price	Ref.	Price
500 to 1000			603 330		603 350		603 370	
1001 to 1200			603 331		603 351		603 371	
1201 to 1400			603 332		603 352		603 372	
1401 to 1600			603 333		603 353		603 373	
1601 to 1800			603 334		603 354		603 374	
1801 to 2000			603 335		603 355		603 375	
2001 to 2200			603 336		603 356		603 376	
2201 to 2400			603 337		603 357		603 377	



## Units with upstand, base section WITHOUT recess

Length (mm)	Depth 500 to 600 mm		Depth 601 to 700 mm		Depth 701 to 800 mm		Depth 801 to 900 mm	
	Ref.	Price	Ref.	Price	Ref.	Price	Ref.	Price
500 to 1000	603 390		603 410		603 430		603 450	
1001 to 1200	603 391		603 411		603 431		603 451	
1201 to 1400	603 392		603 412		603 432		603 452	
1401 to 1600	603 393		603 413		603 433		603 453	
1601 to 1800	603 394		603 414		603 434		603 454	
1801 to 2000	603 395		603 415		603 435		603 455	
2001 to 2200	603 396		603 416		603 436		603 456	
2201 to 2400	603 397		603 417		603 437		603 457	

Units with height lower than 900 mm: same price as the height 900 mm  
Units height 901 to 1200 mm + 10 %



# STAINLESS STEEL UNIT COMBINATIONS

Stainless steel construction. Adjustable height 900 to 950 mm. Rounded worktop front. Reinforced inner panel, reinforced sliding doors.



## Create your layout

- Choosing the units without tops (Page 73 and Page 74)
- Adding the made-to-measure top (see Page 75)

Specify the location of the different elements of your creation in a sketch.

The standard units below are designed to exclusively receive tops made by us.



Units combinations

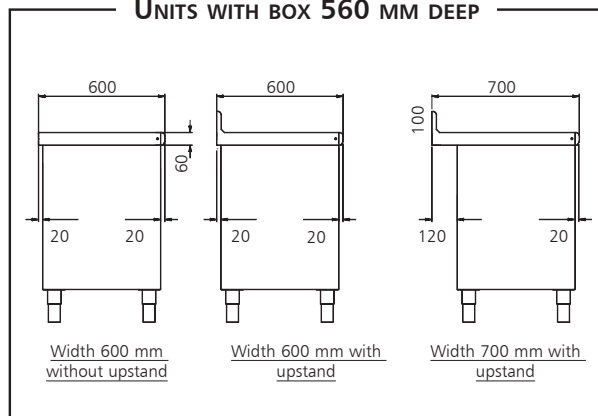
## Open standard units WITHOUT WORKTOP



Unit without worktop overall length (mm)	Box 560 mm deep		Box 660 mm deep	
	Ref.	Price	Ref.	Price
992	844 281		844 291	
1192	844 282		844 292	
1392	844 283		844 293	
1492	844 284		844 294	
1592	844 285		844 295	
1792	844 286		844 296	
1992	844 287		844 297	
2192	844 288		844 298	
2392	844 289		844 299	

Combinations of units, width 600 mm, or 700 mm with upstand. Unit box, width 560 mm overall.

### UNITS WITH BOX 560 MM DEEP



## Standard units with sliding doors WITHOUT WORKTOP



Unit without worktop overall length (mm)	Box 560 mm deep		Box 660 mm deep	
	Ref.	Price	Ref.	Price
992	844 341		844 361	
1192	844 342		844 362	
1392	844 343		844 363	
1492	844 344		844 364	
1592	844 345		844 365	
1792	844 346		844 366	
1992	844 347		844 367	
2192	844 348		844 368	
2392	844 349		844 369	

Combinations of units **without upstand**, width 800 mm (box 760 mm deep): add 10 % to the price of box 660 mm deep





844 606



844 645

## Units with hinged doors without worktop

Storage unit	Overall length (mm)	Box 560 mm deep		Box 660 mm deep	
		Ref.	Price	Ref.	Price
1 doors without worktop	492	844 586		844 587	
2 doors without worktop	792	844 590		844 600	
2 doors without worktop	992	844 606		844 608	

## Units with drawers without worktop

Description	Overall length (mm)	Box 560 mm deep		Box 660 mm deep	
		Ref.	Price	Ref.	Price
Unit 4 drawers with GN 1/1 100 mm stainless steel container	492	844 645		844 641	
Unit 3 drawers with GN 1/1 100 mm, stainless steel container + 1 tablet	492	844 646		844 642	
Unit 3 drawers with GN 1/1 150 mm stainless steel container	492	844 647		844 643	
Unit 1 bottle drawer + 1 drawer with GN 1/1 150 mm stainless steel container	492	844 648		844 644	

## Units with slide bars without worktop

### UNITS WITHOUT DOOR

Description	Overall length (mm)	Box 560 mm deep		Box 660 mm deep	
		Ref.	Price	Ref.	Price
<u>Single units, 11 slide bars</u>					
▪ 600 × 400 mm, opening 400 mm	512	-		844 625	
▪ GN 1/1, opening 325 mm	432	844 611		844 626	
<u>Double units, 2 × 11 slide bars</u>					
▪ 600 × 400 mm, opening 400 mm	992	-		844 635	
▪ GN 1/1, opening 325 mm	827	844 613		844 636	



### UNITS WITH HINGED DOORS

Description	Overall length (mm)	Box 560 mm deep		Box 660 mm deep	
		Ref.	Price	Ref.	Price
<u>single units, 11 slide bars</u>					
▪ 600 × 400 mm, opening 400 mm	512	-		844 627	
▪ GN 1/1, opening 325 mm	432	844 615		844 628	
<u>double units, 2 × 11 slide bars</u>					
▪ 600 × 400 mm, opening 400 mm	992	-		844 637	
▪ GN 1/1, opening 325 mm	827	844 618		844 638	



844 675  
+ customized top  
603 061



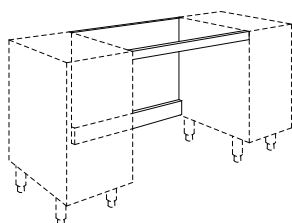
844 676  
+ customized top  
603 061  
+ waste disposal hole  
with rubber 701 102



844 681  
+ customized top  
603 061



703 755



## Bread bin cupboard without worktop

Removable drawer.

Description	Overall length (mm)	Box 560 mm deep	Box 660 mm deep
Bread bin cupboard	492	844 619	844 620

## Unit with integrated bin without top

Unit with drawer fitted on telescopic sliders, including a very rigid bag support consisting of a 4 mm flat bar plus a 50-litre elastic strap bag fixing system. The stainless steel front of the drawer has a flattened folded handle. Stainless steel flap in the upper part to insert waste. This sturdy unit is designed for easy removal of the bag and for optimum and harmonious integration into a made-to-measure racking layout up.

Description	Overall length (mm)	Box 560 mm deep	Box 660 mm deep
Unit with bin without worktop	492	844 670	844 671

## Unit with tilting bin on front

**Unit without top** with very rigid support for 50 litre bags. Elastic strap bag fixing system. Tubular stainless steel foot pedal under the front. 592 mm long.

Description	Overall length (mm)	Box 560 mm deep	Box 660 mm deep
Unit without top	592	844 673	844 675

## Waste pedal bin unit

Unit with hinged door, without top 492 mm long, for bags of 100 to 130 litres. Tubular stainless steel foot pedal under the front operating the lid, underneath which is a waste disposal hole with grey rubber surround. To calculate the price combination, add to the price of the unit, the price of the customized top (with or without upstand) and waste disposal hole with rubber around, ref. 701 102

Description	Overall length (mm)	Box 560 mm deep	Box 660 mm deep
Unit without top	492	844 674	844 676

## Unit with hinged door and storage compartment

Unit with hinged door, 792 or 992 mm long. Compartment 140 mm high to store accessories for preparation.

Description	Overall length (mm)	Box 560 mm deep	Box 660 mm deep
Unit without top	792	844 682	844 680
Unit without top	992	844 683	844 681

## Protective side glass

To separate a work top from a space (washing, etc.). Tempered glass sneeze-guard, 6 mm thick, 250 mm high fixed to 2 brushed stainless steel columns Ø 38 mm with rounded base. Assembly fixed to top of unit with no visible connecting parts. Ref: 703 755

## Free place with rear covered side for container or trolley

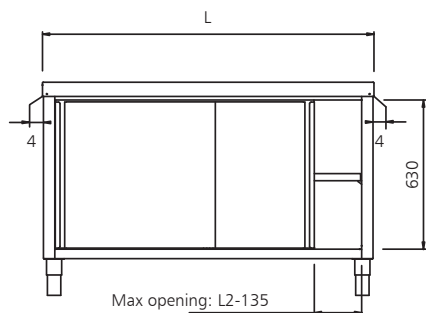
In the case of units in extremity, foresee one lateral covered side on supplement.

Description	Length (mm)	Reference	Price
Place for 1 flour container or 1 low trolley	500	701 806	
Place for others lengths	The linear meter	701 807	
Lateral panelling + legs	90	701 779	



# WORKTOPS FOR UNITS

**Only for Tournus basis.** Upper worktop, monobloc top reinforced by a double side laminated panel. **In order to obtain the total length on the worktop, add 8 mm to the total length of the combination (see drawing).** For lengths over 2800 mm, please contact us (maxi length: 3800 mm).



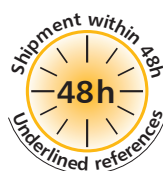
Worktop for unit



Worktop for unit with upstand

Worktop Overall length (mm)	Depth (mm)	Stainless steel worktop without upstand		Stainless steel worktop with upstand	
		Ref.	Price	Ref.	Price
Until 1200	600	602 911		602 961	
1201 to 1400	600	602 912		602 962	
1401 to 1600	600	602 913		602 963	
1601 to 1800	600	602 914		602 964	
1801 to 2000	600	602 915		602 965	
2001 to 2200	600	602 916		602 966	
2201 to 2400	600	602 917		602 967	
2401 to 2600	600	602 918		602 968	
2601 to 2800	600	602 919		602 969	
Until 1200	700	603 011		603 061	
1201 to 1400	700	603 012		603 062	
1401 to 1600	700	603 013		603 063	
1601 to 1800	700	603 014		603 064	
1801 to 2000	700	603 015		603 065	
2001 to 2200	700	603 016		603 066	
2201 to 2400	700	603 017		603 067	
2401 to 2600	700	603 018		603 068	
2601 to 2800	700	603 019		603 069	
Until 1200	800	603 111		603 161	
1201 to 1400	800	603 112		603 162	
1401 to 1600	800	603 113		603 163	
1601 to 1800	800	603 114		603 164	
1801 to 2000	800	603 115		603 165	
2001 to 2200	800	603 116		603 166	
2201 to 2400	800	603 117		603 167	
2401 to 2600	800	603 118		603 168	
2601 to 2800	800	603 119		603 169	

For basis other than Tournus, + 30 %



Consult'Express



Your shipping date

# EXTRA-COST FOR CUSTOMIZED UNITS AND COMBINATIONS



701 024



701 025



130 566



Waste disposal hole + collar 701 102



Ball corner



## Worktop

Description	Reference	Price
Folded lateral upstand to right	701 776	
Folded lateral upstand to left	701 777	
Lateral upstand added to right (+ 20 mm)	701 763	
Lateral upstand added to left (+ 20 mm)	701 764	
Sheet steel for hiding the back recess on the units with upstand	701 708	
Seal cover between units 60 mm wide on front	130 566	
Orbital polishing, the linear meter	701 024	
Mirror polished edging, the linear meter	701 025	

## WASTE CHUTE

Waste chute Ø 150 mm with dropped edges, on the left	701 101 G	
Waste chute Ø 150 mm with dropped edges, on the right	701 101 D	
Waste chute Ø 150 mm with dropped edges, in the center	701 101 C	
Waste chute + rubber flange, on the left	701 102 G	
Waste chute + rubber flange, on the right	701 102 D	
Waste chute + rubber flange, in the center	701 102 C	
Anti-drip edges	701 005	

## EXTRA COST FOR WORKTOP 20/10th THICKNESS OF MM

Worktop, 2 mm thickness pour units length until 1800 mm the linear meter (1)	701 008	
Worktop, 2 mm thickness pour units length greater than 1800 mm the linear meter(1)	701 009	
2 Ball corners for units with upstand	701 080	
4 Ball corners for central units	701 079	

## Pans

Description	Reference	Price
Welded basin 400 × 400 × 250 mm with overflow pipe + adaptation shelf, on the left (2)	701 780 G	
Welded basin 400 × 400 × 250 mm with overflow pipe + adaptation shelf, on the right (2)	701 780 D	
Welded basin 400 × 400 × 250 mm with overflow pipe + adaptation shelf, in the center (2)	701 780 C	
Welded basin 500 × 500 × 300 mm with overflow pipe + adaptation shelf, on the left (3)	701 781 G	
Welded basin 500 × 500 × 300 mm with overflow pipe + adaptation shelf, on the right (3)	701 781 D	
Welded basin 500 × 500 × 300 mm with overflow pipe + adaptation shelf, in the center (3)	701 781 C	
Cylindrical welded basin Ø 300 mm, depth 160 mm with overflow pipe, on the left (4)	701 033 G	
Cylindrical welded basin Ø 300 mm, depth 160 mm with overflow pipe, on the right (4)	701 033 D	
Cylindrical welded basin Ø 300 mm, depth 160 mm with overflow pipe, in the center (4)	701 033 C	

(2) For unit minimum width 560 mm (drawing Page 72)

(3) For unit minimum width 660 mm (drawing Page 72)

(4) Specify with the order right or left-hand sink and the drilling diameter for the tap (one or double hole)







Tap 230 300



Tap 230 507

## Tap

Description	Reference	Price
Mixer tap 1/2, flow rate 30 l/mn	<u>230 300</u>	
Mixer tap with electronic control, flow rate 3 l/mn	<u>230 507</u>	
Drilling for tap (not supplied)	701 782	

## Others

Description	Reference	Price
Lock for units with sliding doors (2)	<u>118 882</u>	
Lock for units with hinged doors (1 by door)	701 770	
4 Wheels with stainless steel cover ø 125 mm with 2 brakes	701 778	
Lower connection plate between units – per unit	<u>130 567</u>	
Stainless steel plinths, per linear metre (1)	701 790	

(1) for lengths < 1 m, take the price of 1 m

(2) Delivery in kit form - on unit with drawers: extra-cost per drawer

118 882



130 567





Consult'Express



Your shipping date

## BREAD MAKING UNIT

Stainless steel units, height 900 mm. Glued beech plywood top, 26 mm thick. Front door can be raised and stored under the work surface. 6 slide bar levels. 4 wheels Ø 125 mm with 2 brakes



504 701

Description	Overall dim.L x P x H (mm)	Reference	Price
Bread making unit 800 x 600 mm	1025 x 800 x 900	<u>504 700</u>	
Bread making unit 900 x 700 mm	1025 x 800 x 900	<u>504 701</u>	
Stainless steel grids	800 x 600	<u>805 087</u>	
S/s grids with reinforcements and stops	900 x 700	<u>805 088</u>	
Marine plywood	800 x 600 x 15	<u>221 630</u>	
Marine plywood	900 x 700 x 15	<u>221 092</u>	



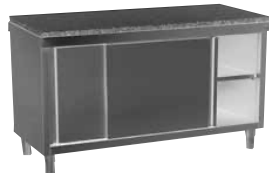
805 088



## UNITS WITH GRANITE WORKTOP

An adaptation is required to make a unit with a granite top. To calculate the whole price: add the price of the granite to the price of the unit with corresponding stainless steel top (standard or composition). Colour: crema julia.

**Sheets of granite supplied separately:** to avoid any risk of breakage during transport, they are shipped on a frame, to be provided for in the order.



Granit  
Crema  
Julia\*

Description	Reference	Price
Granite worktop, thickness 30 mm, per m²	701 760	
Granite worktop, thickness 30 mm, with upstand, per m²	701 761	
Easel for transport (obligatory if granite ordered alone)	701 771	

\*\* Other colours available: consult us for prices and delivery times

## UTENSIL WALL BRACKETS

Wall-mounted brackets to store kitchen and confectionary utensils and accessories. Drilled stainless steel panels high for removable hooks, 200 mm long. 2 heights: 660 and 900 mm. 2 lengths: 600 and 900 mm. The lengths 1200, 1500 and 1800 mm are formed by juxtaposing the base support. Each accessories holder bracket is delivered with a lot of hooks whose number varies depending on the surface. Security: hooks have a protective cap made of polyethylene.



509 706

x 4

Description	Overall dim. L x h (mm)	Number of removable hooks	Reference	Price
Accessories holder bracket	600 x 660	8	<u>509 700</u>	
Accessories holder bracket	900 x 660	12	<u>509 701</u>	
Accessories holder bracket	1200 x 660	16	<u>509 702</u>	
Accessories holder bracket	1500 x 660	20	<u>509 703</u>	
Accessories holder bracket	1800 x 660	24	<u>509 704</u>	
Accessories holder bracket	600 x 900	12	<u>509 705</u>	
Accessories holder bracket	900 x 900	16	<u>509 706</u>	
Accessories holder bracket	1200 x 900	24	<u>509 707</u>	
Accessories holder bracket	1500 x 900	28	<u>509 708</u>	
Accessories holder bracket	1800 x 900	32	<u>509 709</u>	
Set of 4 hooks	L. 200 mm		<u>221 124</u>	





# HIGH CUPBOARDS



802 924

THE  
TOURNUS  
ASSET

- Doors with bent handle with flattened edge over the whole height of the cabinet.
- Distributed load: up to **160 Kg** per shelf.
- Suspended sliding doors with no lower rail to prevent build-up of dirt.
- Rilsan coated door guide for noiseless sliding.

## High cupboards with sliding doors

Stainless steel welded construction, height front edge 1800 mm. **Reinforced inner pannels. Reinforced sliding doors. Sloping top.** 3 adjustable shelves.

Description	Overall dim. W x l x h (mm)	Reference	Price
High cupboard with sliding doors	1000 × 600 × 1910	<a href="#">802 921</a>	
High cupboard with sliding doors	1200 × 600 × 1910	<a href="#">802 922</a>	
High cupboard with sliding doors	1400 × 600 × 1910	<a href="#">802 923</a>	
High cupboard with sliding doors	1600 × 600 × 1910	<a href="#">802 924</a>	
High cupboard with sliding doors	1800 × 700 × 1925	<a href="#">802 925</a>	
High cupboard with sliding doors with lock	1000 × 600 × 1910	<a href="#">812 921</a>	
High cupboard with sliding doors with lock	1200 × 600 × 1910	<a href="#">812 922</a>	
High cupboard with sliding doors with lock	1400 × 600 × 1910	<a href="#">812 923</a>	
High cupboard with sliding doors with lock	1600 × 600 × 1910	<a href="#">812 924</a>	
High cupboard with sliding doors with lock	1800 × 700 × 1925	<a href="#">812 925</a>	

## High cupboards with hinged doors

Stainless steel welded construction, height front edge: 1800 mm. **Reinforced inner pannels. Reinforced doors with lock. Sloping top. Sturdy hinges.** 2 adjustable shelves+ 1 central shelf fixed.

Description	Overall dim. W x l x h (mm)	Reference	Price
High cupboard with hinged doors	1000 × 600 × 1910	<a href="#">802 941</a>	
High cupboard with hinged doors	1200 × 600 × 1910	<a href="#">802 942</a>	
High cupboard with hinged doors	1400 × 600 × 1910	<a href="#">802 943</a>	
High cupboard with hinged doors	1600 × 600 × 1910	<a href="#">802 944</a>	



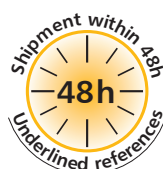
802 943

## Extras for high cupboard

Shelves are suitable for high cupboards with sliding doors and with hinged doors.

Supplementary shelf for high cupboard	1000 × 600	<a href="#">802 931</a>	
Supplementary shelf for high cupboard	1200 × 600	<a href="#">802 932</a>	
Supplementary shelf for high cupboard	1400 × 600	<a href="#">802 933</a>	
Supplementary shelf for high cupboard	1600 × 600	<a href="#">802 934</a>	
Supplementary shelf for high cupboard	1800 × 700	<a href="#">802 935</a>	

Extra cost for high cupboard with stainless steel wheels Ø 125 mm including 2 brakes - Ref.: [701 778](#)



Consult'Express



Your shipping date

# CUPBOARDS FOR CLEANING PRODUCTS AND BROOMS

Stainless steel welded construction, height front edge: 1800 mm. Reinforced doors with lock.

## Internal layout:

- cupboard without partition 1 hinged door: 3 adjustable shelves.
- cupboard without partition 2 hinged doors: 2 adjustable shelves + 1 central shelf fixed
- cupboard with vertical partition: 3 adjustable half-shelves + 1 fixed undershelf.



Distributed load:  
up to 100 Kg per shelf.



802 953

## Flat bottom cupboard

Description	Overall dim. l x W x h (mm)	Reference	Price
Cupboard 1 door without partition	600 x 500 x 1890	<u>802 954</u>	
Cupboard 2 doors without partition	1000 x 500 x 1890	<u>802 964</u>	
Cupboard 1 door with vertical partition	600 x 500 x 1890	<u>802 953</u>	
Cupboard 2 doors with vertical partition	1000 x 500 x 1890	<u>802 963</u>	



802 967



## Diamond point base cupboards

Diamond point base with central discharge. GN 1/1 stainless steel recovery container on sliders in lower part.

Description	Overall dim. l x W x h (mm)	Reference	Price
Cupboard 1 door without partition	600 x 500 x 1890	<u>802 958</u>	
Cupboard 2 doors without partition	1000 x 500 x 1890	<u>802 968</u>	
Cupboard 1 door with vertical partition	600 x 500 x 1890	<u>802 957</u>	
Cupboard 2 doors with vertical partition	1000 x 500 x 1890	<u>802 967</u>	



## Supplementary shelves

Description	Reference	Price
Supplementary shelf for cupboard 1 door without partition	<u>121 987</u>	
Supplementary shelf for cupboard 2 doors without partition	<u>121 988</u>	
Supplementary shelf for cupboard 1 door with partition	<u>121 989</u>	
Supplementary shelf for cupboard 2 doors with partition	<u>121 990</u>	

Extra cost for cupboard for cleaning products with stainless steel wheels Ø 125 mm including 2 braked  
Ref. 701 778



# WALL CUPBOARDS

Stainless steel construction, height front edge 600 mm. Reinforced sliding doors. Reinforced sides. **Sloping top (10°)**. Folded handles on the whole height of the doors. One adjustable shelf. Load up to 160 kg per shelf. Wall fastening with 2 brackets.



803 383

THE  
TOURNUS  
ASSET

- Doors with bent handle with flattened edge over the whole height of the cabinet.
- Distributed load: up to **160 Kg** per shelf.
- Suspended sliding doors with no lower rail to prevent build-up of dirt.
- Rilsan coated door guide for noiseless sliding.

## Cupboards with sliding doors

Description	Overall dim. W × I (mm)	Reference	Price
Wall cupboard with sliding doors	400 × 1000	<a href="#">803 381</a>	
Wall cupboard with sliding doors	400 × 1200	<a href="#">803 382</a>	
Wall cupboard with sliding doors	400 × 1400	<a href="#">803 383</a>	
Wall cupboard with sliding doors	400 × 1500	<a href="#">803 384</a>	
Wall cupboard with sliding doors	400 × 1600	<a href="#">803 385</a>	
Wall cupboard with sliding doors	400 × 1800	<a href="#">803 386</a>	
Wall cupboard with sliding doors	400 × 2000	<a href="#">803 387</a>	

## Cupboards with hinged doors

Reinforced hinged doors with key.

Description	Overall dim. W × I (mm)	Reference	Price
Wall cupboard with 1 hinged door + key	400 × 500	<a href="#">803 378</a>	
Wall cupboard with 2 hinged doors + key	400 × 1000	<a href="#">803 379</a>	

## Options

Options	Reference	Price
Pack of 2 sliding bars with 1 GN 1/3 100 copolyester container	<a href="#">803 352</a>	
Pack of 2 sliding bars with 1 GN 1/3 100 stainless steel container	<a href="#">803 353</a>	
Double bottom (1)	701 952	
Lock for cupboard with sliding doors (2)	<a href="#">118 882</a>	

(1) Must be ordered with the cupboard - containers in lower part not available anymore.  
(2) Delivery in kit form, to assemble.



### Containers on slide bars in rear part:

- for cupboard length 1000 and 1200 mm: foresee 5 containers
- for cupboard length 1400 and 1600 mm: foresee 7 containers
- for cupboard length 1800 and 2000 mm: foresee 9 containers

# CORNER WALL CUPBOARD

Stainless steel wall cupboard. One hinged door with key, one adjustable shelf. Width 400 mm, height 600 mm. Overall dimensions: 700 × 700 mm. Ref. [803 356](#)



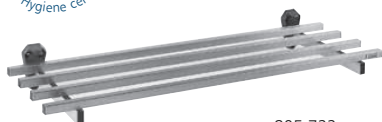


Consult'Express



Your shipping date

# WALL SHELVES



805 722

## Wall shelves 4 bars

Stainless steel construction. 4 welded square bars 25 × 25 mm on 2 brackets (3 brackets for length 2200 mm). Wall fastening with screw. Distributed load: 150 kg (according to type of wall). NF Food-Hygiene certification.

Description	Overall dim. W × L (mm)	Reference	Price
Wall shelf 4 bars	400 × 800	<u>805 715</u>	
Wall shelf 4 bars	400 × 1000	<u>805 720</u>	
Wall shelf 4 bars	400 × 1200	<u>805 721</u>	
Wall shelf 4 bars	400 × 1400	<u>805 722</u>	
Wall shelf 4 bars	400 × 1500	<u>805 726</u>	
Wall shelf 4 bars	400 × 1600	<u>805 723</u>	
Wall shelf 4 bars	400 × 1800	<u>805 724</u>	
Wall shelf 4 bars	400 × 2000	<u>805 725</u>	
Wall shelf 4 bars	400 × 2200	<u>805 727</u>	

Others lengths: price of the upper length

THE  
TOURNUS  
ASSET

- Welded corners, radiused front strip and upstand similar to those of the Tournus stainless steel tables and units.
- Rear upstand recessed by 40 mm for clearance for pipes.



509 753

## Wall shelves with stainless steel tray

Stainless steel construction. Adjustable tray, thickness 1,2 mm and rear upstand height 50 mm. Useful width 360 mm. Radiused front strip and splash back similar to those of the Tournus stainless steel tables and units. Distributed load: 100 kg (according to type of wall). Independent brackets, wall-mounted by screws. Rear splash back recessed by 40 mm for clearance for pipes. Possibility of positioning shelves on top of one another to obtain several levels or positioning them side by side to extend the length. NF Food-Hygiene certification

Description	Overall dim. W × L (mm)	Reference	Price
Wall shelf with s/s tray	400 × 800	<u>509 769</u>	
Wall shelf with s/s tray	400 × 1000	<u>509 751</u>	
Wall shelf with s/s tray	400 × 1200	<u>509 752</u>	
Wall shelf with s/s tray	400 × 1400	<u>509 753</u>	
Wall shelf with s/s tray	400 × 1500	<u>509 754</u>	
Wall shelf with s/s tray	400 × 1600	<u>509 755</u>	
Wall shelf with s/s tray	400 × 1800	<u>509 756</u>	
Wall shelf with s/s tray	400 × 2000	<u>509 757</u>	
Wall shelf with s/s tray	400 × 2200	<u>509 758</u>	

Others lengths: price of the upper length





## Wall shelves with racks

Stainless steel construction. Racks'height: 1 level 315 mm, 2 levels 700 mm, pitch 55 mm, fixed by screw. Adjustable trays, thickness 1,2 mm, rear upstand, height 50 mm.



### WIDTH 290 MM

Overall dim. W x l (mm)	Shelf 1 level		Shelf 2 levels	
	Ref.	Price	Ref.	Price
290 x 800	<a href="#">509 971</a>		<a href="#">509 986</a>	
290 x 1000	<a href="#">509 972</a>		<a href="#">509 987</a>	
290 x 1200	<a href="#">509 973</a>		<a href="#">509 988</a>	
290 x 1400	<a href="#">509 974</a>		<a href="#">509 989</a>	
290 x 1500	<a href="#">509 975</a>		<a href="#">509 990</a>	
290 x 1600	<a href="#">509 976</a>		<a href="#">509 991</a>	
290 x 1800	<a href="#">509 977</a>		<a href="#">509 992</a>	
290 x 2000	<a href="#">509 978</a>		<a href="#">509 993</a>	
290 x 2200	<a href="#">509 979</a>		<a href="#">509 994</a>	



### WIDTH 390 MM

Overall dim. W x l (mm)	Shelf 1 level		Shelf 2 levels	
	Ref.	Price	Ref.	Price
390 x 800	<a href="#">509 910</a>		<a href="#">509 925</a>	
390 x 1000	<a href="#">509 911</a>		<a href="#">509 926</a>	
390 x 1200	<a href="#">509 912</a>		<a href="#">509 927</a>	
390 x 1400	<a href="#">509 913</a>		<a href="#">509 928</a>	
390 x 1500	<a href="#">509 914</a>		<a href="#">509 929</a>	
390 x 1600	<a href="#">509 915</a>		<a href="#">509 930</a>	
390 x 1800	<a href="#">509 916</a>		<a href="#">509 931</a>	
390 x 2000	<a href="#">509 917</a>		<a href="#">509 932</a>	
390 x 2200	<a href="#">509 918</a>		<a href="#">509 933</a>	

Others lengths: price of the upper length





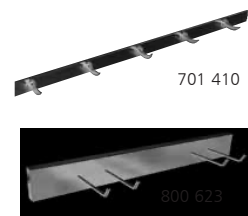
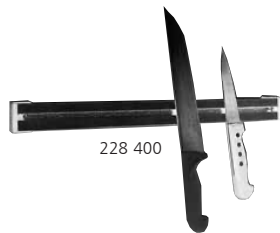


Consult'Express



Your shipping date

## WALL ACCESSORIES



Description	Overall dim. W x l (mm)	Reference	Price
Fold wall shelf (for GN and 600 x 400 mm sizes)	485 x 530 x 735	<u>800 622</u>	
Utensils-hanging bar	Length: 1000	<u>805 775</u>	
Bar to index cards	Length: 950	<u>229 974</u>	
Bar to index cards	Length: 1220	<u>230 059</u>	
Magnetic knife-holder	Length: 500	<u>228 400</u>	
Sloping display- top for 3 GN 1/3 pans (not provided)	Length: 550	<u>805 793</u>	
Sloping display-top for 6 GN 1/3 pans (not provided)	Length: 1080	<u>805 794</u>	
Sloped stand with 2 levels for 2 GN 1/1 pans (not supplied)	550 x 350 x 600	<u>805 773</u>	
Wall-mounted shelf with sloped stand	535 x 330 x 600	<u>805 774</u>	
Meat hook bar, 8 teeth per linear meter	The meter	701 410	
S/steel wall support for meat hook bar the unit		<u>228 350</u>	
S/steel wall support for scraper	900 x 210 x 100	<u>800 623</u>	
Rectangular splashback*	The meter	701 415	
Rectangular splashback with insulation*	The meter	701 416	

\* dimensions to specify when ordering

