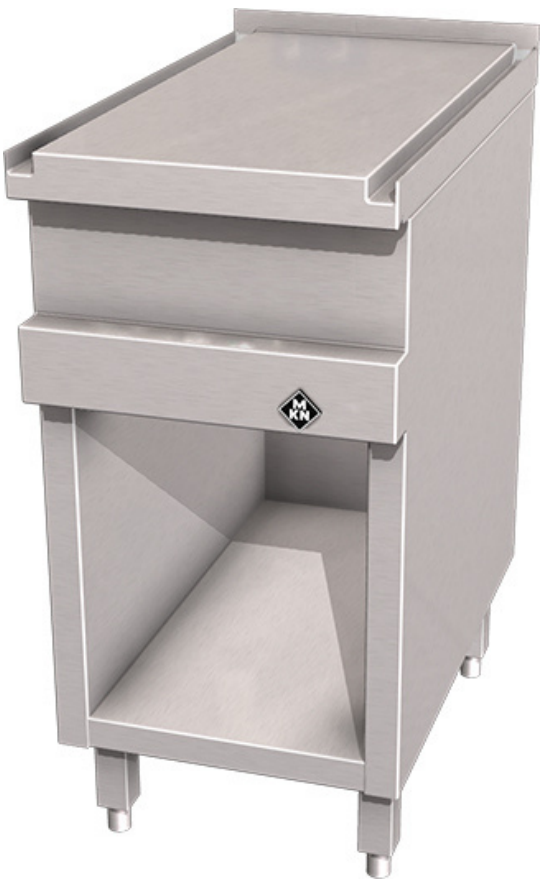




Product Advantages:

- Connection, sealing by special clip bars flush mounted to the cover.
- Appliance feet which are adjustable in height.
- Casing and cover are made completely of stainless steel
- Work table with heavy-duty, smooth work surface, covered on the underside with sound absorbing plates.
- Body is buckling resistant, self-supporting, closed construction with side walls, rear wall and bottom.
- Cover bent downwards 30 mm at the front and bent upwards 20 mm at the rear.
- Designed as a drip edge at the front.
- 50 mm cover projection closed to the appliance body.



Technical Data:

Dimensions (W x D x H):	400 x 700 x 700 mm
Effective area:	1
Dim.: effect. Area (mm):	400 x 700 x 850
Net weight (kg):	33
Gross weight (kg):	38

