



PHOENIKS

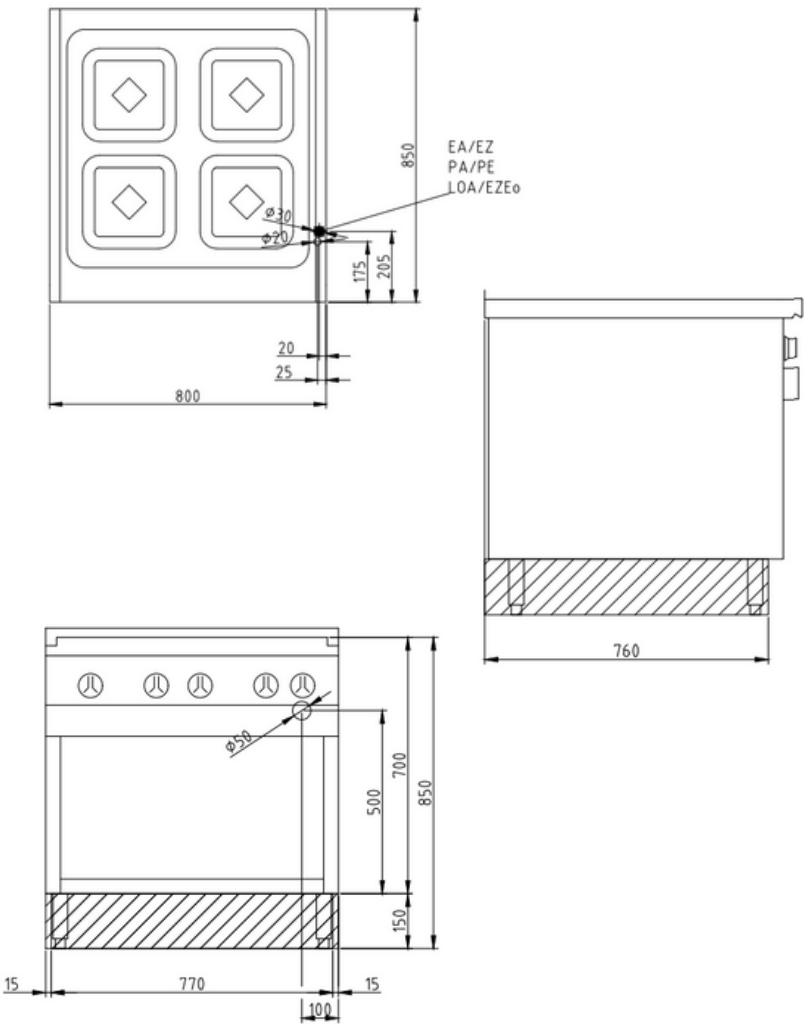
ELECTRIC CERAMIC RANGE VITRO 4 X 270
AND ELECTRIC OVEN OPTIMA 850
MODEL NO: 2023406

Product Advantages:

- Interior chamber has large inside radii which are easy to clean.
- Completely wired internally.
- Appliance feet are adjustable in height.
- Housing made completely of stainless steel.
- Handle is on the side, away from the area where heat escapes from the oven chamber.
- Body is buckling resistant.
- Protection against overheating by automatic power resetting.
- Infinitely variable temperature control for each cooking zone.

Installation requirements:

- Electrical power provided by customer.



Technical Data:

Width x Height x Depth (mm)	800 x 700 x 850 mm
Effective area	1
Dim.: effect. Area (mm)	700 x 540
Connected load (elect.) (kW):	21,4
Voltage (V) / EC:	415 3 phase AC
Recommended fuses (A):	3 x 32
Frequency Range (Hz):	50/60
Net weight (kg):	118
Gross weight (kg):	126
Heat emission latent (W):	2144
Heat emission sensitive (W):	5090
Type of protection:	IPX5



phoeniks.com.au
P- 1300 405 404
E- contact@phoeniks.com.au