

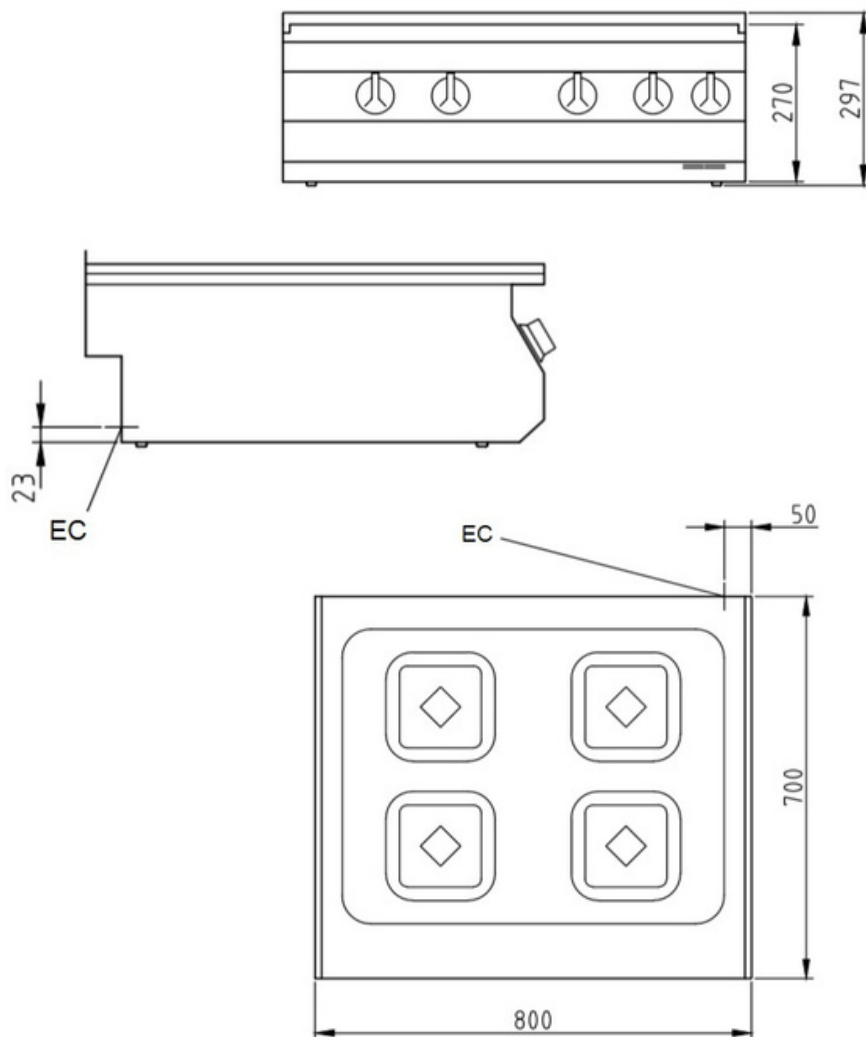


### Product Advantages:

- Housing made completely of stainless steel.
- U-shaped connection channel, flush with top plate; tightly fitted to the substructure, for maximum hygiene.
- Buckling resistant, self-supporting, closed construction.
- Hob zones with radiating heating elements 210 mm diameter, 2,3 kW each.
- Pan size recognition can be switched to manual control.
- Protection against overheating by automatic power resetting.
- Seamless glass ceramic hob 6 mm thick and area 700 x 540 mm.

### Installation requirements:

- Electrical power provided by customer.



### Technical Data:

|                               |                    |
|-------------------------------|--------------------|
| Width x Height x Depth (mm)   | 800 x 270 x 700 mm |
| Effective area                | 1                  |
| Dim.: effect. Area (mm)       | 700 x 540          |
| Connected load (elect.) (kW): | 9.2                |
| Voltage (V) / EC:             | 415 3 phase AC     |
| Frequency (Hz):               | 50                 |
| Recommended fuses (A):        | 3 x 32             |
| Net weight (kg):              | 38                 |
| Gross weight (kg):            | 47                 |
| Heat emission latent (W):     | 736                |
| Heat emission sensitive (W):  | 1840               |
| Type of protection:           | IPX4               |

