



PHOENIKS

ELECTRIC BRATT PAN 3/1 GN
MOTORISED TILTING 111L
MODEL NO: 2021408C

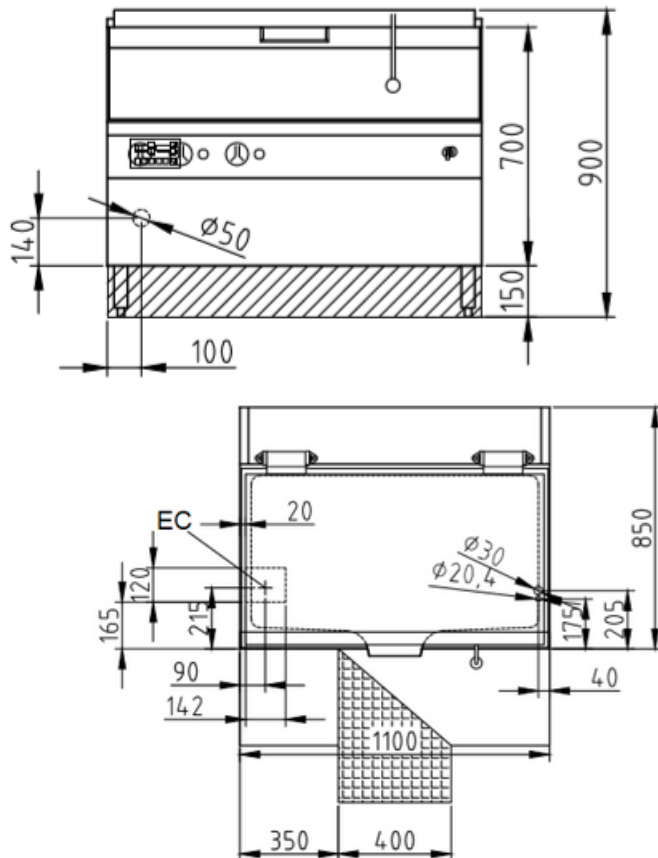
For boiling, steaming, frying, braising, simmering. For cooking meat, quick-fried meat, egg products, fish, milk products and side dishes.

Product Advantages:

- Housing made completely of chrome nickel steel (1.4301) / (304).
- Tightly welded top plate with lateral drain channels for easy cleaning.
- Pan made of heat resistant steel as standard.
- SUPRA heating system-contact heating elements integrated into aluminium blocks ensure greater heating capacity and even distribution of heat, with short heating up times and longer service life.
- Appliance with two separately adjustable heating zones.
- Ideal pan positioning prevents spills and guarantees that the pan is fully emptied.
- Equipped for connection to a power optimization system with potential free contact as standard.
- Double walled hinged lid.

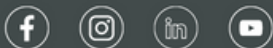
Installation requirements:

- Electrical supply provided by customer.



Technical Data:

Width x Height x Depth (mm)	1100 x 700 x 850
Effective area	1
Dim.: effect. Area (mm)	1020 x 190 x 535
Nominal capacity (L):	111
Nominal fill quantity (L):	89
Connected load (elect.) (kW):	14.6
Voltage (V) / EC:	415 3 phase AC
Recommended fuses (A):	3 x 32
Frequency range (Hz):	50
Net weight (kg):	194
Gross weight (kg):	237
Heat emission latent (W):	5840
Heat emission sensitive (W):	6570
Type of protection:	IPX5



phoeniks.com.au
P- 1300 405 404
E- contact@phoeniks.com.au