

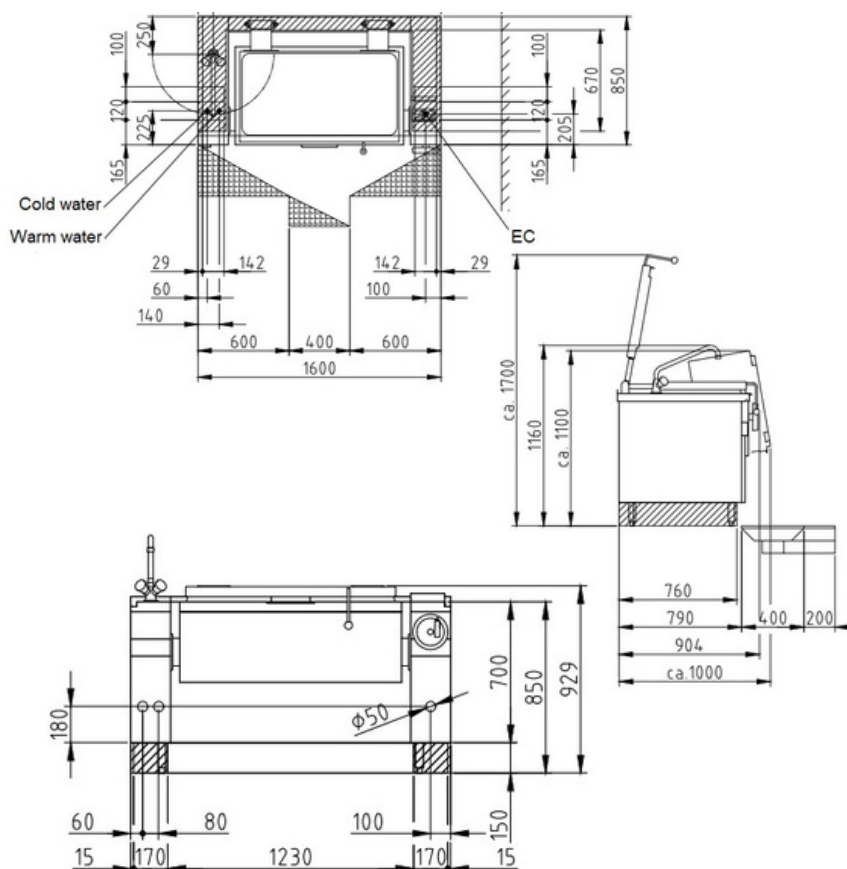
For boiling, steaming, frying, braising, simmering as well as pressureless cooking and pressure cooking for shorter cooking times. For cooking meat, quick-fried meat, egg products, fish, milk products and side dishes.

Product Advantages:

- Housing made completely of stainless steel.
- Tightly welded top plate with lateral drain channels for easy cleaning.
- SUPRA contact heating elements for an optimal heat distribution and short heating up times.
- 65 mm gap between pan and side frame, for easy cleaning.
- Electronic temperature regulation
- "EcoControl" as standard.
- Double walled hinged lid as standard.
- Equipped for connection to a power optimization system with potential free contact as standard.
- Including mixing faucet

Installation requirements:

- Electrical supply provided by customer.



Technical Data:

Width x Height x Depth (mm)	1600 x 700 x 850
Effective area	1
Dim.: effect. Area (mm)	1020 x 300 x 540
Nominal capacity (L):	165
Nominal fill quantity (L):	143
Connected load (elect.) (kW):	19.2
Voltage (V) / EC:	415 3 phase AC
Recommended fuses (A):	3 x 32
Frequency range (Hz):	50
Net weight (kg):	280
Gross weight (kg):	320
Heat emission latent (W):	7680
Heat emission sensitive (W):	8640
Type of protection:	IPX5

