



# PHOENIKS

## ELECTRIC BRATT PAN MAGNUM 2/1 GN-3000

### MOTORISED TILTING 111L

### MODEL NO: 10019147

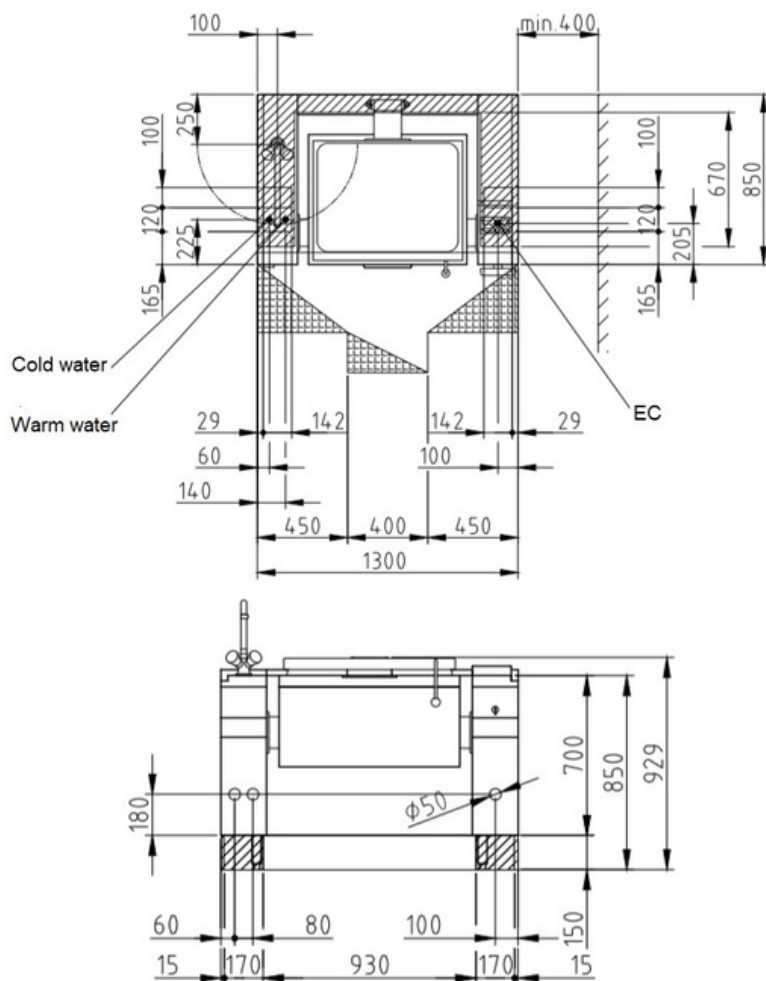
For boiling, steaming, frying, braising, simmering. For cooking meat, quick-fried meat, egg products, fish, milk products and side dishes.

#### Product Advantages:

- Housing made completely of stainless steel.
- Tightly welded top plate with lateral drain channels for easy cleaning..
- SUPRA contact heating elements for an optimal heat distribution and short heating up times.
- 65 mm gap between pan and side frame, for easy cleaning.
- Electronic temperature regulation
- "EcoControl" as standard.
- Double walled hinged lid as standard.
- Equipped for connection to a power optimization system with potential free contact as standard.
- Including mixing faucet.
- Motorised titlting system

#### Installation requirements:

- Electrical supply provided by customer.



#### Technical Data:

|                               |                  |
|-------------------------------|------------------|
| Width x Height x Depth (mm)   | 1300 x 700 x 850 |
| Effective area                | 1                |
| Dim.: effect. Area (mm)       | 700 x 300 x 540  |
| Nominal capacity (L):         | 111              |
| Nominal fill quantity (L):    | 96               |
| Connected load (elect.) (kW): | 14.6             |
| Voltage (V) / EC:             | 415 3 phase AC   |
| Recommended fuses (A):        | 3 x 32           |
| Frequency range (Hz):         | 50               |
| Net weight (kg):              | 235              |
| Gross weight (kg):            | 265              |
| Heat emission latent (W):     | 5840             |
| Heat emission sensitive (W):  | 6570             |
| Type of protection:           | IPX5             |



phoeniks.com.au

P- 1300 405 404

E- contact@phoeniks.com.au