



PHOENIKS

ELECTRIC BRATT PAN MAGNUM 2/1 GN
MANUAL TILTING 80L
MODEL NO: 10019139

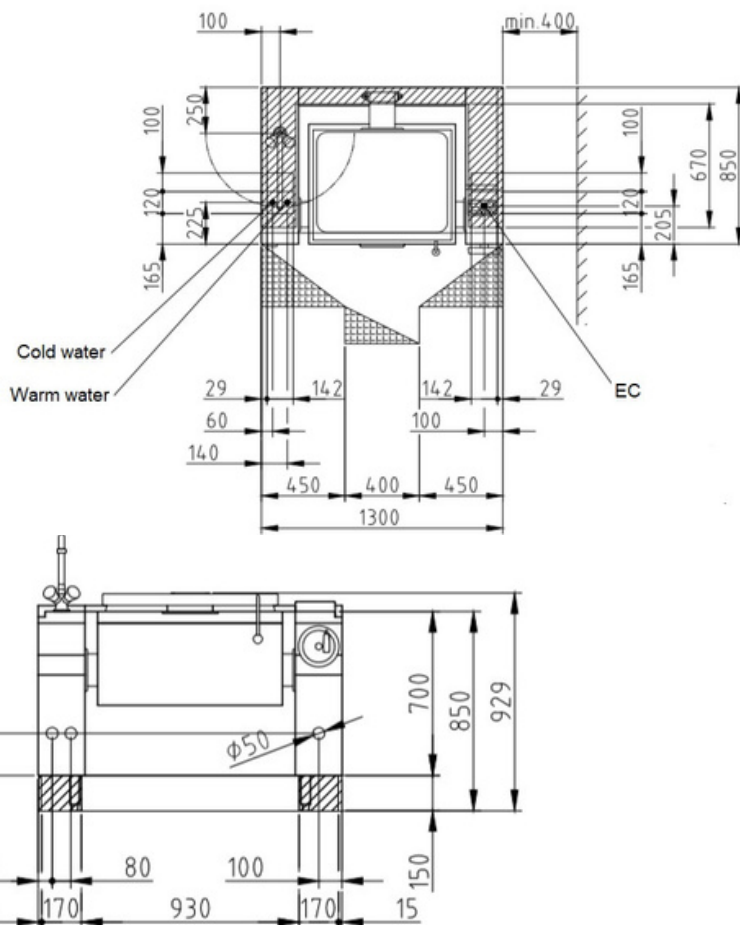
Multifunctional cooking appliance for cooking meat, quick-fried meat, egg products, fish, milk products and side dishes.

Product Advantages:

- Housing made completely of stainless steel
- Tightly welded top plate with lateral drain channels for easy cleaning.
- SUPRA contact heating elements for an optimal heat distribution and short heating up times.
- 65 mm gap between pan and side frame, for easy cleaning.
- Electronic temperature regulation "EcoControl" as standard.
- Double walled hinged lid as standard.
- Equipped for connection to a power optimization system with potential free contact as standard.
- Including mixing faucet.

Installation requirements:

- Electrical supply provided by customer.



Technical Data:

Width x Height x Depth (mm)	1300 x 700 x 850
Effective area	1
Dim.: effect. Area (mm)	700 x 210 x 540
Nominal capacity (L):	80
Nominal fill quantity (L):	65
Connected load (elect.) (kW):	14.4
Voltage (V) / EC:	415 3 phase AC
Recommended fuses (A):	3 x 32
Frequency range (Hz):	50
Net weight (kg):	222
Gross weight (kg):	262
Heat emission latent (W):	5760
Heat emission sensitive (W):	6480
Type of protection:	IPX5



phoeniks.com.au
P- 1300 405 404
E- contact@phoeniks.com.au