



# PHOENIKS

## FLEXICOMBI CLASSIC MAXI 10.2 ELECTRIC

### MODEL NO: FKE102R\_CL

MKN combi steamer FlexiCombi 20 tray GN 1/1, with manual operation system.

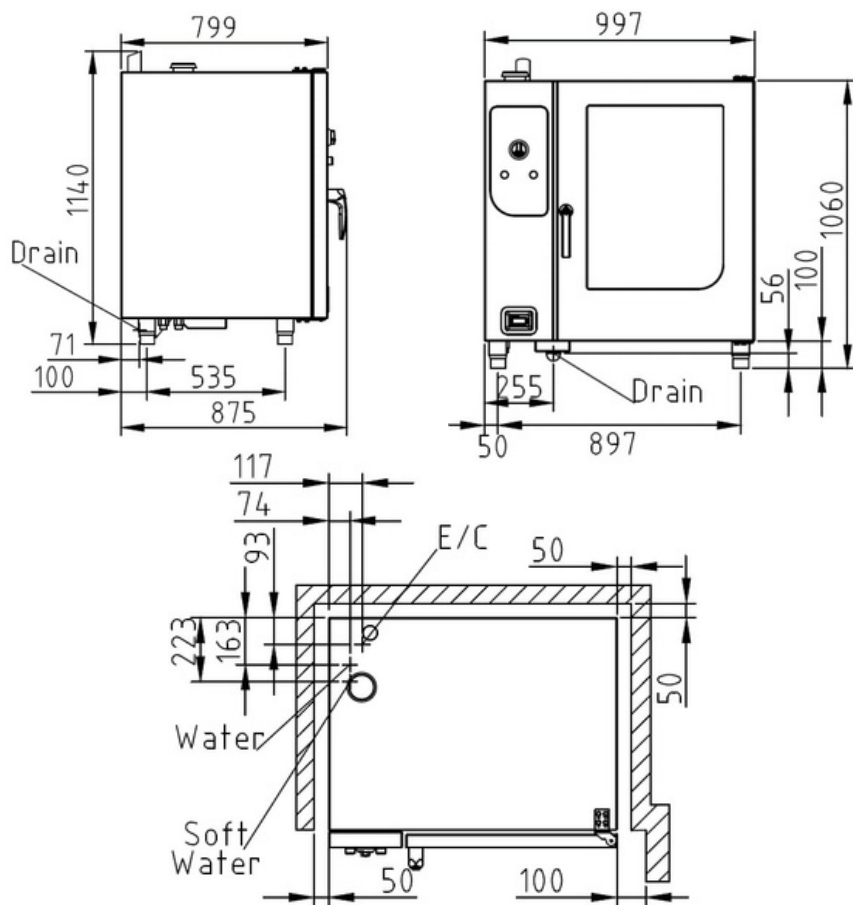
#### Product Advantages:

- ClimaSelect – Humidity and temperature control measurement (= reliable food quality).
- 5 programmable fan speeds for best cooking uniformity.
- Up to 100 individual cooking programmes can be stored in up to 6 steps.
- 316 S 11 durable hygienic cooking chamber. EasyLoad crosswise insertion.
- Handshower.
- DynaSteam2 – It speeds up the cooking process and saves energy.
- Integrated heat exchanger.
- WaveClean – Automatic cleaning system (safe, easy, economical).
- USB interface.
- 3 years warranty parts and labour.

#### Installation requirements:

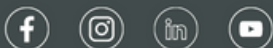
- Soft Water / Water supply / Connection to waste water provided by customer.
- If mineral content is high, reverse osmosis system may be advisable.

Capacity: Meals per day	150 - 200
-------------------------	-----------



#### Technical Data:

Width x Height x Depth (mm):	997 x 1060 x 799
Connected load (electrical) (kW):	30.5
Voltage (V) / EC:	415 3 phase AC
Recommended fuses (A):	3 x 50
Frequency range (Hz):	50
Soft Water connection:	DN 20 (R ¾" inside)
Water connection:	DN 20 (R ¾" inside)
Waterpressure (kPa):	200 - 600 (2 - 6 bar)
Drain connection:	DN 50
Gastronorm 1/1 (530 x 325 mm):	20 (max. 65 mm deep)
Gastronorm 2/1 (530 x 650 mm):	10 (max. 65 mm deep)
Plates Ø 28 cm:	40
Plates Ø 32 cm – plate trolley:	40
Material housing:	1.4301
Material cooking chamber:	1.4404
Gross weight (kg):	180
Heat emission latent (W):	5279
Heat emission sensitive (W):	3519
Type of protection:	IPX 5



phoeniks.com.au

P- 1300 405 404

E- contact@phoeniks.com.au